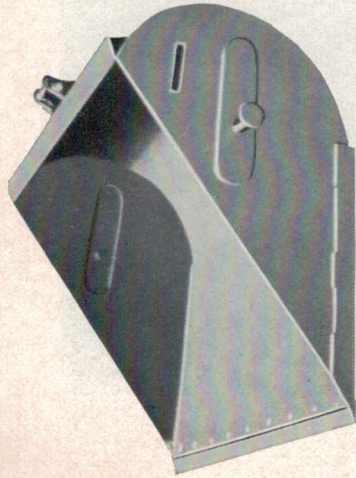
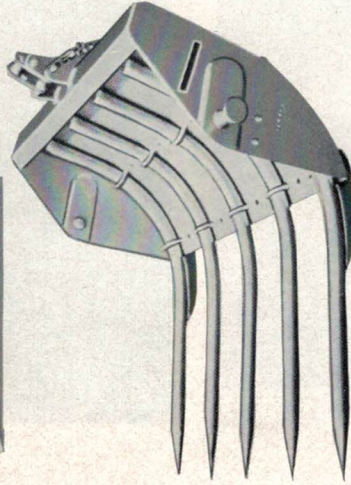


Ladewerkzeuge für Frontlader Typ FL 2

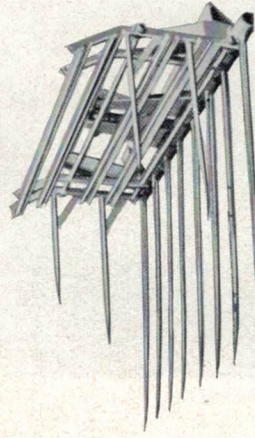
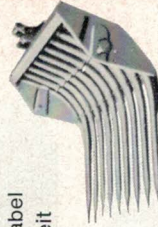
SCHMIDT



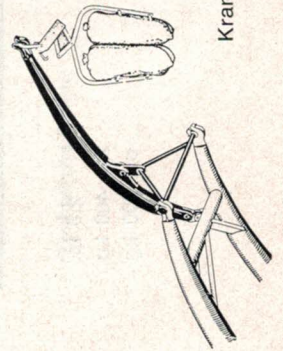
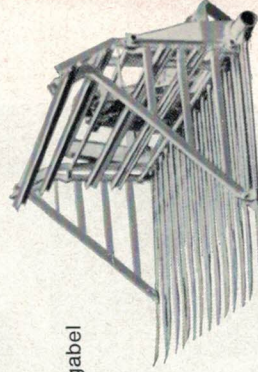
Ladeschaufel 250 l
85 cm breit



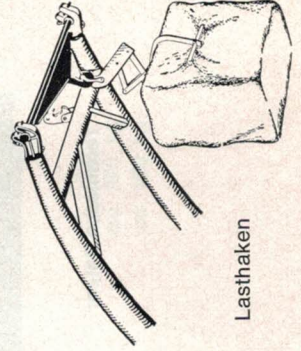
Stallungsgabel
85 cm breit



Erntegabel



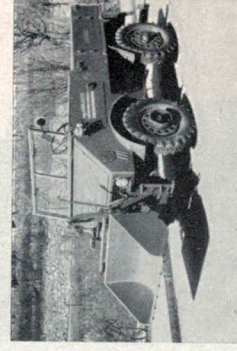
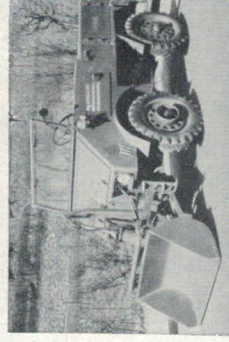
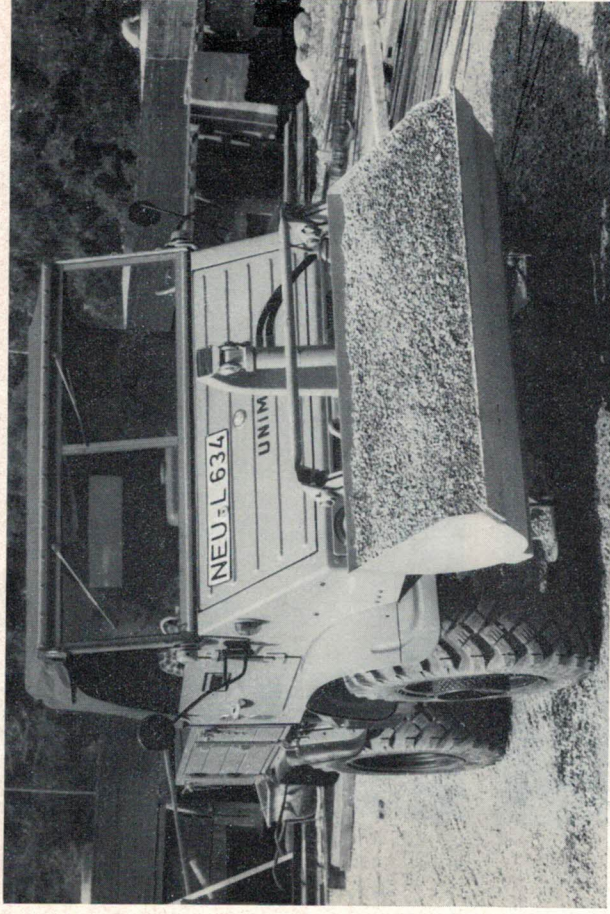
Kranausleger



Lasthaken

SCHMIDT

Transportmulde Typ T 1



Technische Daten:

Arbeitsbreite
Muldenhöhe
Gewicht

1,20 m
0,60 m
140 kg

